

## Alarm Controller Units

### 8 ZONE ALARM CONTROLLER UNIT Item Code: OZD-REL-RP208CN

The OZD-REL-RP208CN Alarm Controller Unit is a Professional Industrial Strength Alarm Controller System especially designed for homes, offices, factories, government buildings, conference and exhibition centres, air ports, public transport centres, shopping malls, car park facilities, hotels, sports centres, police and defence complexes.

The OZD-REL-RP208CN Alarm Controller Unit adopts the latest LSI Application, SMT Jointing Technology and Digital Program Design to ensure the reliability and stability of the system and offers Network Data Communication, Alarm Linkage Output and 8 Alarm Patrol Zones as standard and additional 8 or 16 Alarm Patrol Zone Modules can be added on at any time in the future, making it fully expandable so that your Alarm System can expand in the future as your home or business does. It is also fully compatible with all Standard International Alarm System Communication Formats.



The OZD-REL-RP208CN Alarm Controller Unit also offers Chargeable Circuits and Built-in Digital Clock, On-board Memory to save Programmed Parameters if power to the System is cut, simple installation, supports any Address Information Programming which makes System Configuration simple, Zone Terminal Resistors (2.2K $\Omega$ ), LCD Keypad Alarm Event Type Output, Special Zones: Zone-5 is the Fire Zone, Zone-6 is the Tamper Zone, 11 types of Programmable Zones, 7 types of Voice Formats, Zone Terminal: NC, NO, Single End with Resistor, 50 Event Records, 8 Groups of 4 Gradable Codes, Built-in Siren Driver, 7 types of Programmable Siren Voice Types, Daily Test Report, Alarm Disarm / Arm Report, Programmable Circuit Response Time for Each Zone, can support up to 4 LCD Keypads, can support Wireless Remote Control, can support Voice Module, offers a maximum distance between Alarm Controller and Alarm



Sensor Module of 1,000 Meters, Built-in Digital Communicator, Compatible with Contact ID, 4+2, 4 Follow-me Phone Numbers, 2 Central Station Numbers for Alarm Event Alerts and has many more advance features.

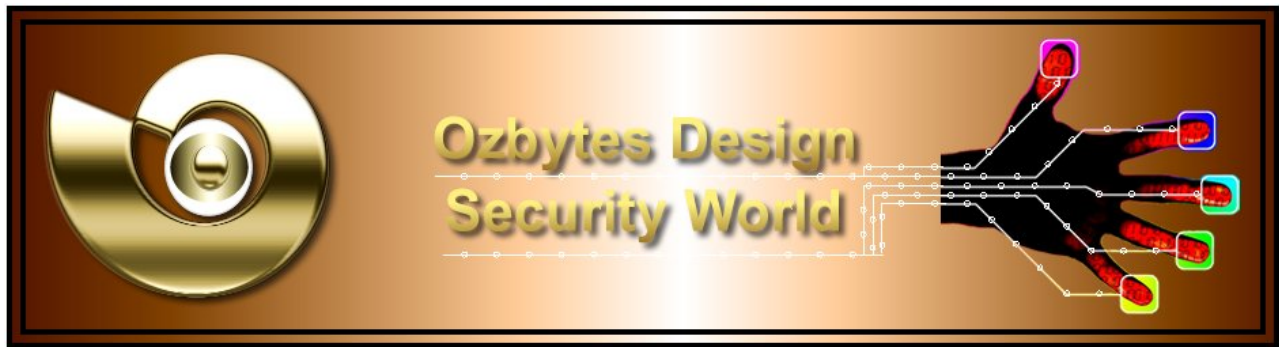
The OZD-REL-RP208CN Alarm Controller Unit is housed inside a secure, Industrial Strength Steel Key Lockable Housing Box, is sturdy and light-weight in construction and also includes 1 OZD-REL- RP208KCL Alarm Control Keypad.

The OZD-REL-RP208CN Alarm Controller Unit is fully compatible with all our Alarm Sensor Modules, including our Wired and Wireless Door Opening Sensors, PIR Motion Detectors, PIR Motion Detectors with Pet Immunity, PIR Curtain Motion Detectors, Dual Infrared Ceiling Motion Detectors, Digital Vibration Detector, Strong Electricity Break-in Detector, Smoke and Gas Detectors as well as our Alarm Siren, Alarm Strobe Light and Alarm Siren with Strobe Light Units.

Furthermore, the OZD-REL-RP208CN Alarm Controller Unit can be used in conjunction with our OZD-REL-RV971A Digital Vibration Detector and our Wired or Wireless Door Opening Sensors to provide a highly professional Vandal-proof Installation for our complete range of Biometric Fingerprint Access Control Units.

The OZD-REL-RP208CN Alarm Controller Units and Alarm Sensor Modules have successfully been installed in the following Industry sectors:

- Residential Homes
- Housing Complexes
- Commercial Offices
- Banks
- Manufacturers
- Hospitals
- Restaurants
- Schools
- Laboratories
- Restricted Access Offices / Rooms
- Parking Lots
- Warehouses
- Public Institutions
- Membership and Fitness Centres
- Hotels



### Core Applications:

- Intrusion Detection and Alerting.
- Tampering (Vandalism) Detection and Alerting.
- Electronic Management System Intrusion or Tampering and Alerting.
- ATM System Intrusion or Tampering and Alerting.
- Premises Monitoring.

### Technical Specifications:

#### OZD-REL-RP208KCL LCD Alarm Controller Keypad:

- Display of 32 Characters in Two Lines.
- 3 Keypad Emergency Zones: Panic [1] + [2], Fire [4] + [5], Special Emergency [7] + [8].
- Menu Indicates the User Functions and Administrator Programming.
- Key-press with Audible Feedback.
- System Status Display.
- System Error Display.
- LED Indication: Alarm, Power, Armed, Disarmed, Bypass, Ready, Tamper.
- Administrator Information is displayed on LCD Screen.
- LCD Panel Backlight.
- Tampering is monitored.
- Alarm by Duress Code.
- Easy to Use Hot-keys for Simple Bypassing and Not-ready Zones Display.
- Single Button Press for Quick Arming.
- Single Button Press for Quick Perimeter Arming.
- Alarm Memory Display.
- Up to 4 LCD Keypads can be connected to our Alarm Controllers.

#### OZD-REL-RP208CN Alarm Controller:

- Zone Terminal Resistor (2.2 K $\Omega$ ).
- 8 Alarm Zones on Main-board, expandable in sets of 8 and 16 Alarm Zones.
- Expandable Wired 8 and 16 Alarm Zone Modules available.
- Special Zones: Zone 5 is the Fire Zone; Zone 6 is the Tamper Zone.
- 11 types of Programmable Zones, 7 types of Voice Formats.
- Zone Terminal: NC, NO, Single End with Resistor.
- Programmable Output: 70 mA.



- Expandable to 4 Large Current Output: 3 A.
- 50 Event Records.
- 8 Groups of 4 Gradable Codes.
- Switch Output: 250 mA.
- Built-in Siren Driver: 750 mA max.
- Built-in Digital Clock.
- Daily Test Report.
- Disarm / Arm Report.
- 4 OZD-REL-RP208KCL LCD Keypads can be connected.
- Circuit Response Time of Each Zone can be set to 10 ms, 500 ms or 1 s.
- Main-board has 7 types of Fire Alarm Bell Voice Driver.
- Connectable with four 1.5V 12 A Power Supply Expansion Boards.
- Main-board has one 70 mA Programmable Open Circuit Collector.
- Connectable with 3 A C Type Programmable Relay.
- Maximum Distance of up to 1,000 Meters between Alarm Modules and Alarm Controller.

#### Siren Voice Output:

- Siren Voice Type is Programmable.
- Current Output : 750 mA (max.)

#### Auxiliary power Output:

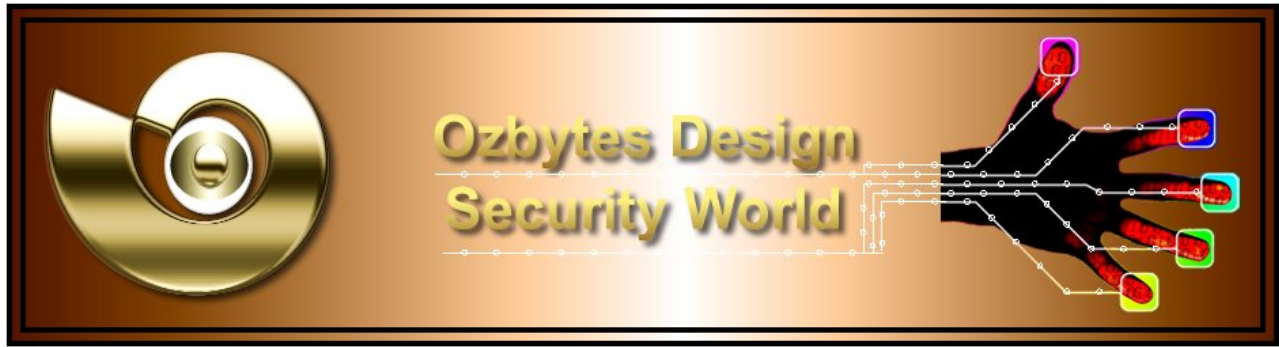
- Auxiliary Power Output: 400 mA.

#### Built-in Digital Communicator:

- Attached Digital Communicator; Compatible with Contact ID, 4+2.
- 4 Follow-me Phone Numbers.
- 2 Central Station Numbers.

#### Codes:

- One Installation Code.
- One Main Administrator Code (can create Duress Code automatically).
- 8 Access Right Assignable User Codes.



#### Periodic Test:

- Sends Test Report to the Alarm Centre automatically at assigned intervals.

#### Peripheral Equipment:

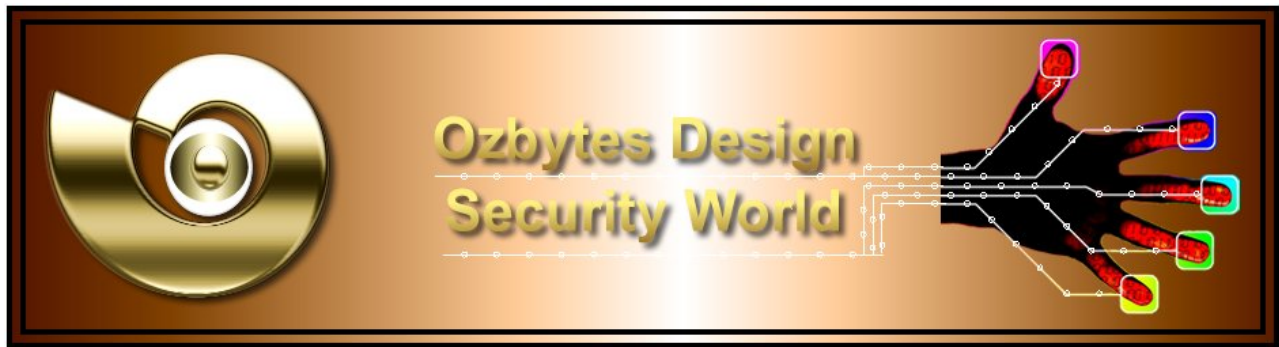
- OZD-REL-RV200V Voice Module for Programmable Voice Instructions.
- OZD-REL-AT201R and OZD-REL-AT201T Wired Wireless Receiver Module and Wireless Transmitter Unit (Remote Control Unit). Disarm / Arm Alarm Controller by Remote Control. Any Zone can be programmed to be the Switch Lock Port.
- Wired and Wireless Door Opening Sensors.
- PIR Motion Detectors.
- PIR Motion Detectors with Pet Immunity.
- PIR Curtain Motion Detectors.
- Dual Infrared Ceiling Motion Detectors.
- Digital Vibration Detector.
- Strong Electricity Break-in Detector.
- Smoke Detectors.
- Gas Detectors.
- Alarm Siren.
- Alarm Strobe Light.
- Alarm Siren with Strobe Light Units.

#### Power Supply Output Expansion Module EPS:

- Connect with Alarm Controller by 4 Lines.
- Provides 2.5 A, 12 V Power to other Alarm Sensor Modules and Sirens.
- Complete supervision of Power Supply Condition, including Battery, AC, Siren Circuit and Auxiliary Power Output.

#### OZD-REL-RV200V Digital Voice Module:

- Programmable 1 Voice Message. Voice Message Broadcast Time is 20 seconds.
- Follow-me Number is Assignable.



### Timing Function:

- Auto Daily Arm.
- Auto Daily Test Report.
- Disarm / Arm Report on LCD Display Screen.

### Monitoring Function:

- Alarm Status Data can be displayed on LCD Keypad and also Transmitted to Central Station.
- Spare Battery Low Power Warning.
- Expansion Module Power Supply Battery Low Power Warning.
- Siren Circuit Error.
- Phone Line Failure.
- Loss of AC Power.
- Loss of Auxiliary Power.
- System Clock Not Set Error.
- Communication Line Blocked.
- Tamper Prevention.
- Fire Alarm Circuit Error.

### Installation:

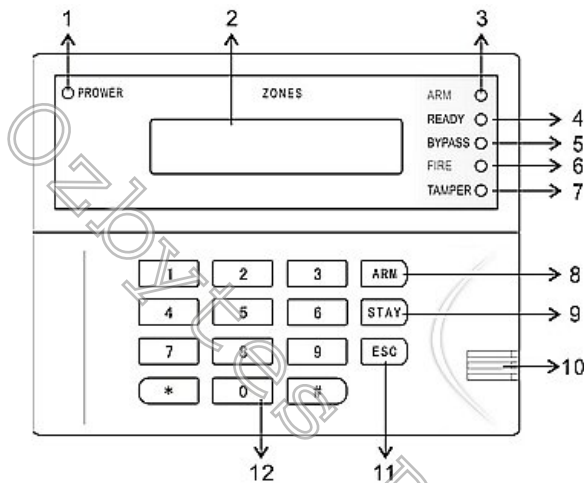
- All Expansion Modules can be connected to the Alarm Controller by 4 Line Cable Connection.
- Maximum Distance up to 1,000 Meters between Alarm Modules and Alarm Controller.

### Technical Data:

- Transformer 16.5V AC 40 VA.
- Spare Battery 12V 4 AH.
- Auxiliary Power Supply 350 mA.
- Switch Lock 250 mA.
- Siren 750 mA.



**OZD-REL-RP208KCL LCD Keyboard Panel Diagram**



**LEGEND**

- 1. Power LED
- 2. LCD Display
- 3. ARM LED
- 4. Disarm LED
- 5. Bypass LED
- 6. Fire LED
- 7. Tamper LED
- 8. ARM Key
- 9. Stay Key
- 10. Buzzer
- 11. Exit / Delete Key
- 12. Digit & Function Keys

**OZD-REL-RP208KCL LCD Keyboard Function Table**

Function	Procedure
Quick arm	[ARM]
Arm by code	[ARM]+[master code]
Arm when stay home	[STAY]
Arm when stay home by code	[STAY]+[master code]
System disarm	[user code]
Duress disarm	[duress code]
Free from siren	[user code]
Bypass/un-bypass zone	[*]+[1]+[user code]+[zone number]
Quick bypass/un-bypass zone	[zone ]at least 2 seconds
Display trouble	[*]+[3]
Display time	[*]+[4]
Set/change main code	[*]+[5]+[master code]+[0]+[new code]
Set/change a user code	[*]+[5]+master code]+[1-9]+[new code]



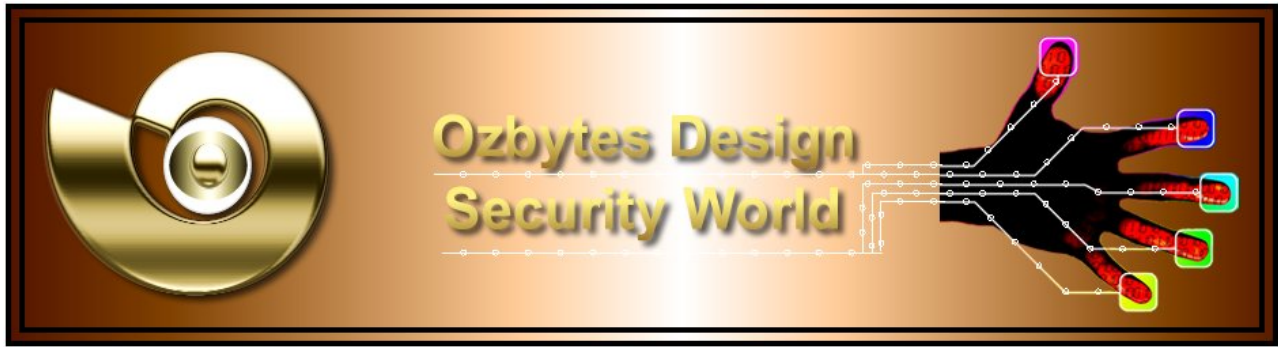
**OZD-REL-RP208KCL LCD Keyboard Function Table continued ...**

Function	Procedure
Set date	[*]+[6]+[1]+[master code]+[MM][DD][YY]
Set time	[*]+[6]+[2]+[master code]+[H][H][M][M]
Auto arm time	[*]+[6]+[3]+[master code]+[H][H][M][M]
Set follow-me phone no. 1	[*]+[7]+[1]+[master code]+[phone No. 1]+ [#]
Set follow-me phone no. 2	[*]+[7]+[2]+[master code]+[phone No. 2]+ [#]
Set follow-me phone no. 3	[*]+[7]+[3]+[master code]+[phone No. 3]+ [#]
Set follow-me phone no. 4	[*]+[7]+[4]+[master code]+[phone No. 4]+ [#]
On/off buzzer	[*]+[8]+[master code]+[1]
On/off door chime	[*]+[8]+[master code]+[2]
Audible kiss-off	[*]+[8]+[master code]+[3]
Display memory	[*]+[9]+[master code]+[event number]
Test system	[*]+[0]+[master code]
keypad panic alarm	[1]+[2] at least 2 seconds
keypad fire alarm	[4]+[5] at least 2 seconds
keypad special emergency	[7]+[8] at least 2 seconds
Escape	[ESC]

**System Status Alert Table**

LCD Display Message	System Status Alert
Battery Low	The Backup Battery Power is low.
AC Power	AC Power is lost.
No Clock	Clock have not been set
No Communication	The Communication is in trouble.
No Siren	The Siren connection is in trouble.





### System Alarm Alert Table

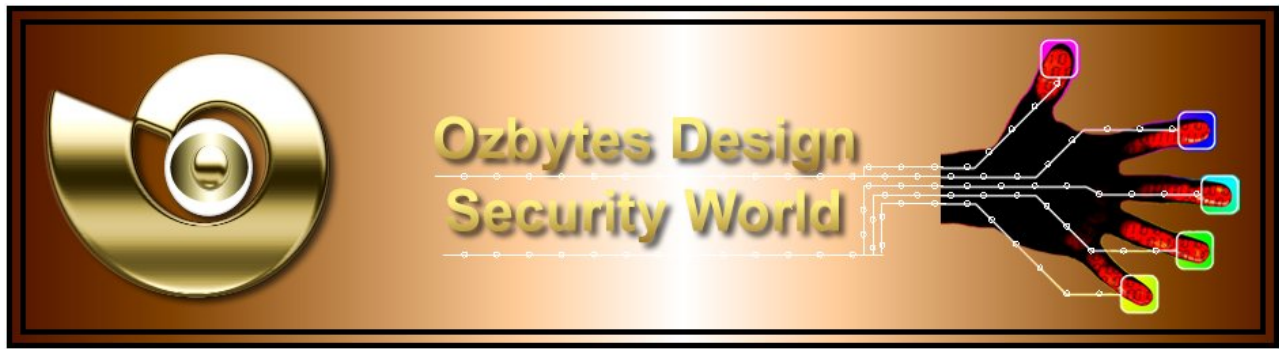
LCD Display Message	Explanation	
	System Disarmed	System Armed
{Default Display}	All the zones are secured and working normally	
Z1	Zone 1 was triggered	An alarm has occurred on Zone 1
Z2	Zone 2 was triggered	An alarm has occurred on Zone 2
Z3	Zone 3 was triggered	An alarm has occurred on Zone 3
Z4	Zone 4 was triggered	An alarm has occurred on Zone 4
Z5	Zone 5 was triggered	An alarm has occurred on Zone 5
Z6	Zone 6 was triggered	An alarm has occurred on Zone 6
Z7	Zone 7 was triggered	An alarm has occurred on Zone 7
Z8	Zone 8 was triggered	An alarm has occurred on Zone 8

### ARM LED Status Alert Table

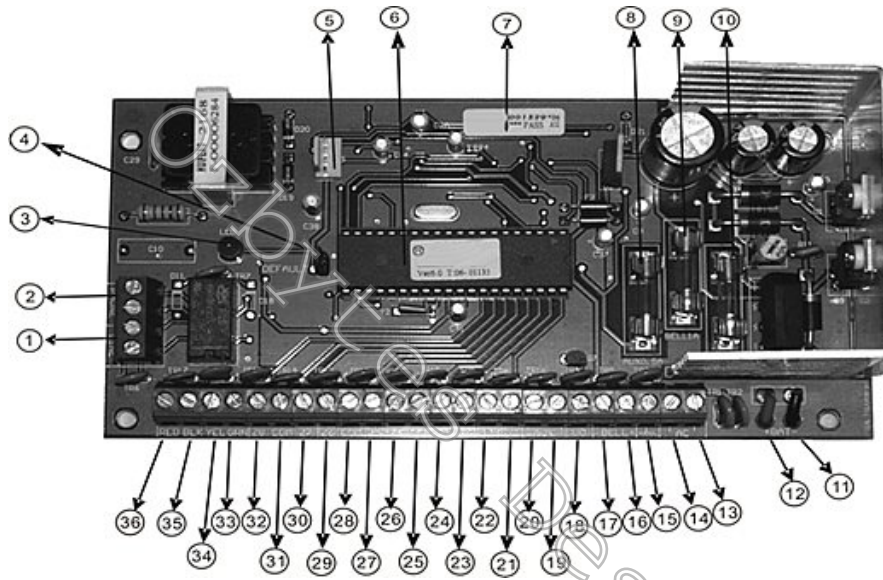
Status	Explanation
On	When the system is armed, in case of any emergency, an alarm will occur. The Siren will sound, and system will also dial the follow-me numbers and send alarm report to alarm centre.
Off	The system is disarmed.
Flashing	Burglar and / or Fire has occurred.

### READY LED Status Alert Table

Status	Explanation
On	All the zones are working normally, and the system can be armed now.
Off	1. Someone is moving in the zone. 2. The system is armed.
Flashing	The system is in Administration status.

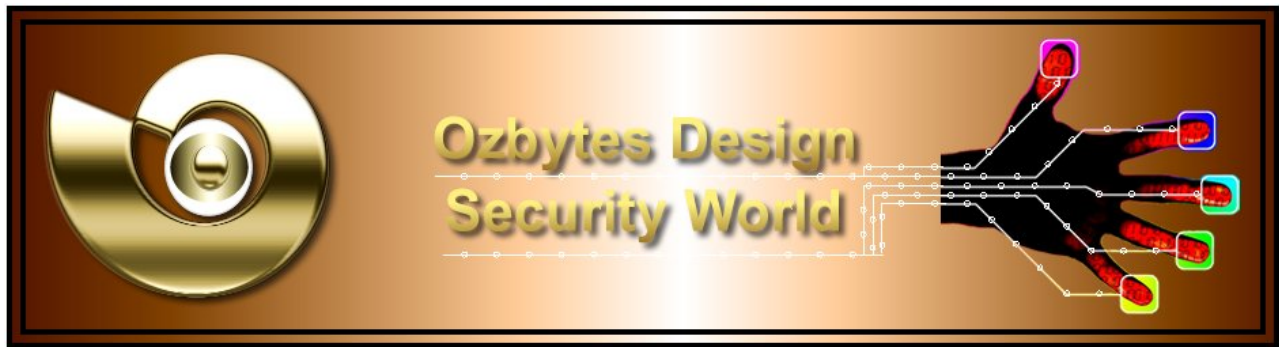


### OZD-REL-RP208CN Alarm Controller Main-board Layout Diagram



#### LEGEND

1. Port "LINE" for Telephone Line.
2. Port "PHONE" for Telephone Set.
3. Dialling LED Indicator.
4. Jumper "DEFAULT" for Restoring Factory Default Settings.
5. Connector for Voice Module.
6. Type and Version Number.
7. Eligibility Label and Product Serial Number.
8. "AUX" Safety for Assistant Power, 0.5 A.
9. "BELL" Safety for Siren Power, 1 A.
10. "BAT" Safety for Standby Power, 2 A.
11. "BAT-" Cathode for Standby Power.
12. "BAT+" Anode for Standby Power.
13. "AC" Low-tension Entry Port for AC Power (AC 16.5 V).
14. "AC" Low-tension Entry Port for AC Power (AC 16.5 V).
15. Ground Port.
16. "BELL+" Connection to Detector Anode.
17. "BELL+" Connection to Detector Cathode.
18. "UO" Utility Outputs.

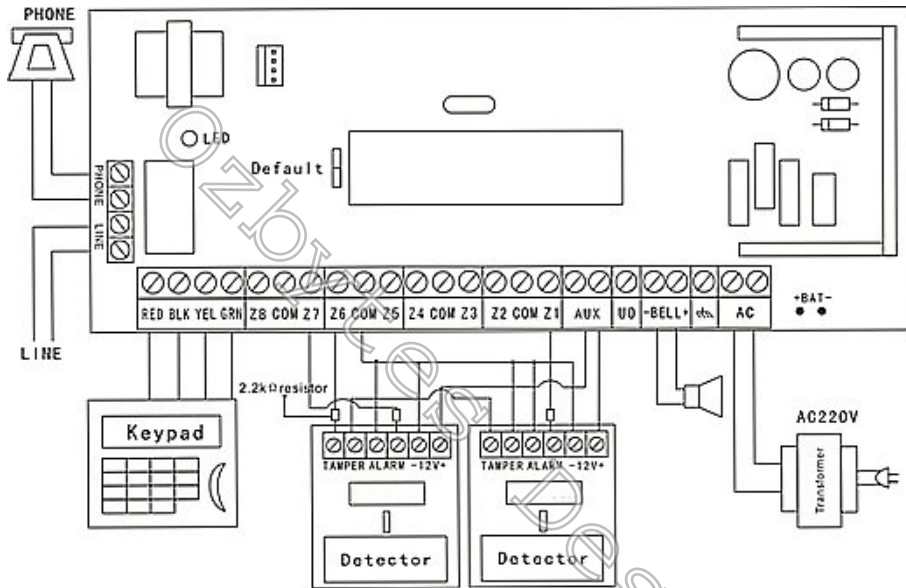


**LEGEND continued...**

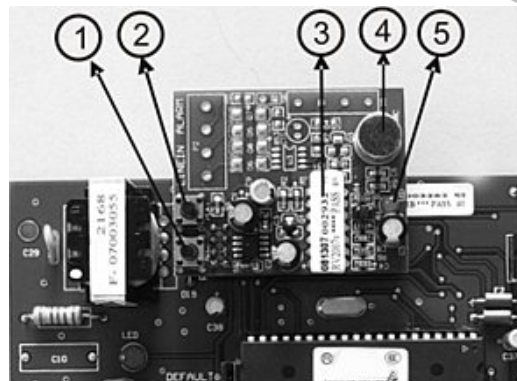
19. "AUX" Connection to Detector(s) Anode "DC12V+".
20. "AUX" Connection to Detector(s) Anode "DC12V+".
21. "Z1" Port for Zone 1, defaults as Entry / Exit / Delay Zone. Connect to one Port of "ALARM" on the Detector.
22. "COM" Communal Port. The "COM" Port should connect to of the Anode of Detector(s) "DC12V-" and one port of the "ALARM" and "TAMPER".
23. "Z2" Port for Zone 2 and "Z3" for Zone 3. Defaults as Instant (Intrusion) Zone.
24. "Z2" Port for Zone 2 and "Z3" for Zone 3. Defaults as Instant (Intrusion) Zone.
25. "COM" Communal Port. The "COM" Port should connect to of the Anode of Detector(s) "DC12V-" and one port of the "ALARM" and "TAMPER".
- 26—"Z4" Port for Zone 4. Defaults as Panic Zone. Suitable for connection with a Panic Button.
- 27—"Z5" Port for Zone 5. Defaults as Fire Zone. Suitable for connect with a Gas Detector or a Smoke Detector.
28. "COM" Communal Port. The "COM" Port should connect to of the Anode of Detector(s) "DC12V-" and one port of the "ALARM" and "TAMPER".
29. "Z6" Port for Zone 6. Defaults as Tamper Zone. The System Installer should connect it with one of the "TAMPER" Ports on the Detector.
30. "Z7" Port for Zone 7 and "Z8" Port for Zone 8. Both of them are defaulted as Interior Zones. When ARM by [STAY], the Interior Zone won't be armed.
31. "COM" Communal Port. The "COM" Port should connect to of the Anode of Detector(s) "DC12V-" and one port of the "ALARM" and "TAMPER".
32. "Z7" Port for Zone 7 and "Z8" Port for Zone 8. Both of them are defaulted as Interior Zones. When ARM by [STAY], the Interior Zone won't be armed.
33. "GRN" - Connect to Green Line on the LCD Keypad.
34. "YRL" - Connect to Yellow Line on the LCD Keypad.
35. "BLK" - Connect to Black Line on the LCD Keypad.
36. "RED" - Connect to Red Line on the LCD Keypad.



**OZD-REL-RP208CN Alarm Controller Electrical Wiring Diagram**



**OZD-REL-RV200V Voice Module Layout Diagram**

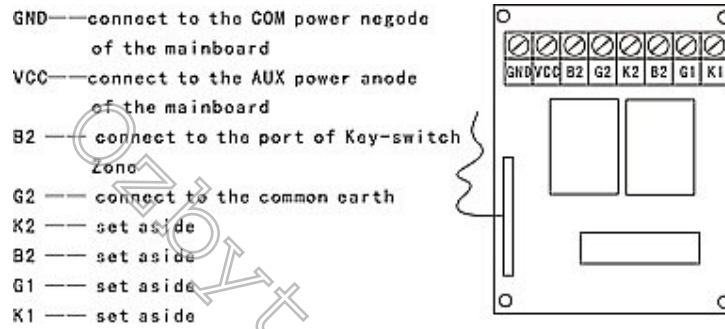


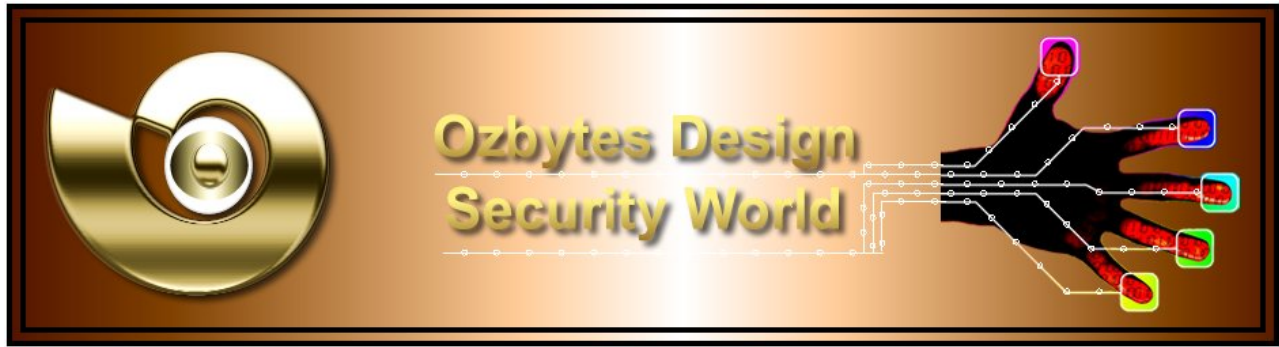
**LEGEND**

1. Record Button.
2. Play Button.
3. Eligibility Label and Product Serial Number.
4. Recording Microphone.
5. LED Status Indicator Light.



### OZD-REL-AT201R Wired Wireless Receiver Module Connection Diagram





Your OZD-REL-RP208CN Alarm Controller Unit has been manufactured and quality assurance tested to ISO9001, FCC and CE Standards.

Your OZD-REL-RP208CN Alarm Controller Unit comes with a full 12 month return-to-base Warranty. Any faulty products will be immediately replaced with a new OZD-REL-RP208CN Alarm Controller Unit.

For all Customer Care issues, contact your Local Reseller in the first instance, or the Australian / International Distributors whose contact details appear below:

Your local reseller is:

**Manufacturer's Agent / Australian and International Distributor:**

<b>Business Name:</b>	Ozbytes Design
<b>A.B.N.:</b>	24 200 625 187
<b>Postal Address:</b>	G.P.O. Box 2224, G.P.O. Melbourne Private Boxes, Melbourne, Victoria, 3001 Australia
<b>Mobile:</b>	0422 170153 (Within Australia) +61 422 170153 (Internationally)
<b>Website URL:</b>	<a href="http://www.ozbytesdesign.com">http://www.ozbytesdesign.com</a>
<b>Email Addresses:</b>	<a href="mailto:info@ozbytesdesign.com">info@ozbytesdesign.com</a> <a href="mailto:customer_care@ozbytesdesign.com">customer_care@ozbytesdesign.com</a> <a href="mailto:support@ozbytesdesign.com">support@ozbytesdesign.com</a>

